



COGENT

RETINUE-RED



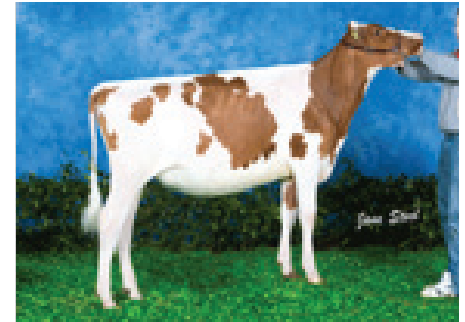
SEXED
SEMEN

Ladino Park Talent x EX94 - 3E Horizon Ranger x EX-4E Enhancer
x EX-3E Romandale Regal x VG Astronaut x VG Roybrook Starlite

- ▶ Outstanding udders
- ▶ Wide rumps with ideal leg set
- ▶ Dam was four times Madison Champion
- ▶ Strong, stylish daughters



Sister: Carrousel Talent Riley Red VG87



Droiton Retinue R Bell Red



Brundcliffe Retinue Sarah VG86



Humeston Retinue Countess VG87

HOLSTEIN PRODUCTION PROOF											
INTERBULL PRODUCTION PROOF							PTA2010 (12/11)				
MILK	FAT KG	PROTEIN KG	FAT %	PROTEIN %	RELIABILITY	PIN	PLI	DTRA (UK)	HIDA (UK)	HD1%	
-256	-6.5	-3.4	0.05	0.06	99	£-4	£52	498	185	3	
LIFESPAN	LIFESPAN REL %	FERT INDEX	FI REL%	PERSISTANCE	MCE%	MCE% REL %	DCE%	DCE REL%			
0.3	85	8.2	92	64	-0.5	45	-0.7	85			
TRAIT			+30	+20	+10	0	-10	-20	-30	SCC REL% 95	VALUE
SOMATIC CELL C	POOR									EXCELLENT	-7

TYPE PROOF										
UK TYPE PROOF	PTAT2010 (12/11)	245 UK DTS				142 UK HDS			94% REL	VALUE
TRAIT		-3	-2	-1	0	+1	+2	+3		
Type Merit	Poor								Excellent	0.77
Mammary	Poor								Excellent	0.95
Legs & Feet	Poor								Excellent	-0.11
Stature	130 cm								154 cm	-0.33
Chest Width	Narrow								Wide	0.63
Body Depth	Shallow								Deep	-0.44
Angularity	Coarse								Open Rib	-1.59
Rump Angle	High Pins								Low Pins	-0.62
Rump Width	Narrow								Wide	0.62
Rear Leg side	Straight								Sickled	-1.52
Foot Angle	Low								Steep	0.94
Fore Udd att	Loose								Tight	2.31
Rear Udd ht	Very Low								Very High	0.93
Udder Supp	Broken								Strong	-0.59
Udder Depth	Below Hock								20 cm above	1.91
Front Teat pl	Outside								Close	0.49
Teat Length	Short								Long	-1.01
Rear Teat pl	Apart								Close	-1.31
Teat pos side	Close								Apart	-0.25
Temperament	Poor								Good	-0.73
Ease of Milk	Slow								Fast	-0.18
Locomotion	Poor								Excellent	-0.02
Condi Score	Low								High	0.78

FH4283 HBN: 63394422783
D.O.B: 20/12/04

